



FAIR PARK
HISTORIC FRANKLIN

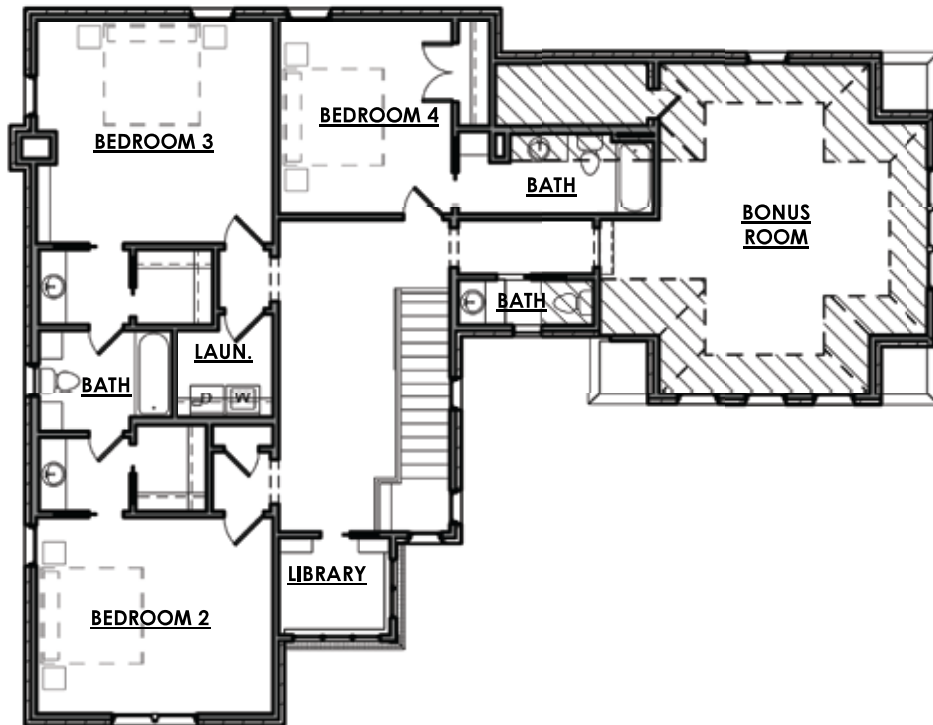
THE ASPEN



- Approx. 3,361 sq ft with 10' ceilings on Main Level
- 4 bedrooms, 3 full & 2 half baths & 2 car garage
- New construction with front door access to Historic downtown Franklin, near unprecedented W Main
- Distinctive features include classic craftsman trim detail, oversized windows and doors, sand and finish hardwood floors
- Luxurious Master Suite with heated tiled floors and towel warmers
- Kitchen with custom cabinetry and high-end appliances package to include 48 inch range and 42 inch panel refrigerator
- Colors and features professionally selected by Nationally known Interior Designer
- Landscape and Hardscapes Professionally designed by Licensed Landscape Architect
- Lawns maintained by HOA



FLOOR 1



FLOOR 2